

NOTES:

1. THESE PLANS ARE DIAGRAMMATIC AND WILL REQUIRE FIELD ADJUSTMENTS. CONSULT WITH LANDSCAPE ARCHITECT FOR ADJUSTMENTS DUE TO OBSTRUCTIONS OR CONFLICTS NOT AVAILABLE FOR REVIEW AT THE TIME THESE DRAWINGS WERE CREATED.

REVISIONS

NO.	DATE	DESCRIPTION	BY

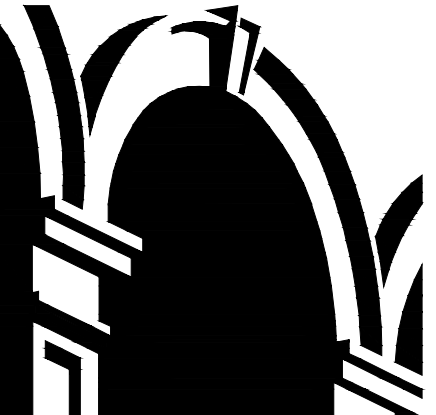
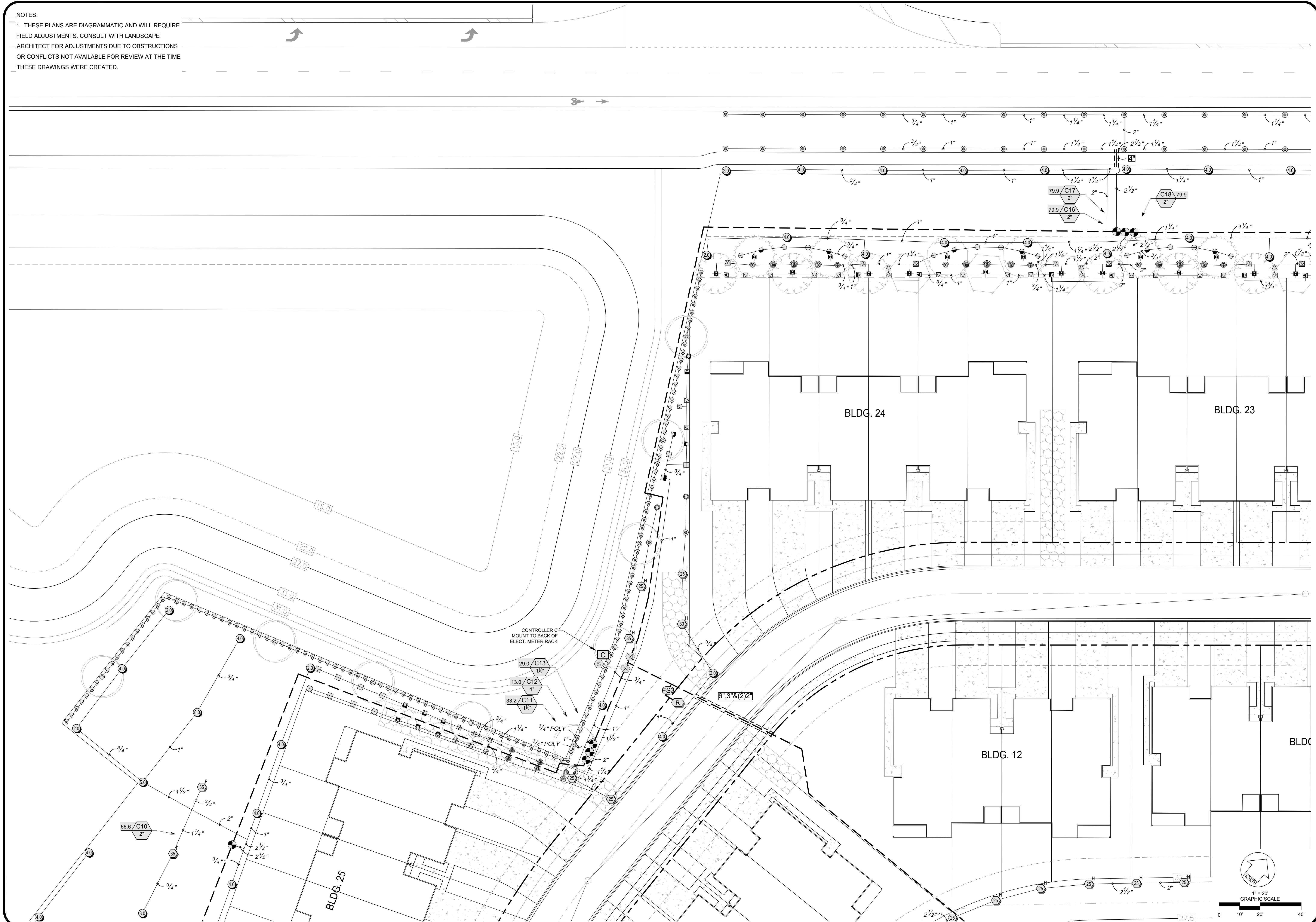
THIS DRAWING IS AN INSTRUMENT OF SERVICE AND THE PROPERTY OF BASHAM & LUCAS DESIGN GROUP AND SHALL REMAIN THEIR PROPERTY. THE USE OF THIS DRAWING IS RESTRICTED TO THE ORIGINAL SITE FOR WHICH IT IS PREPARED AND PUBLICATION THEREOF IS EXPRESSLY LIMITED TO SUCH USE.

ENTRY #2 and TOWNHOMES

at BEACON LAKE - St. Johns County, FL
LANDSCAPE - BID SET

Prepared for BBX Capital Real Estate

IRRIGATION PLAN



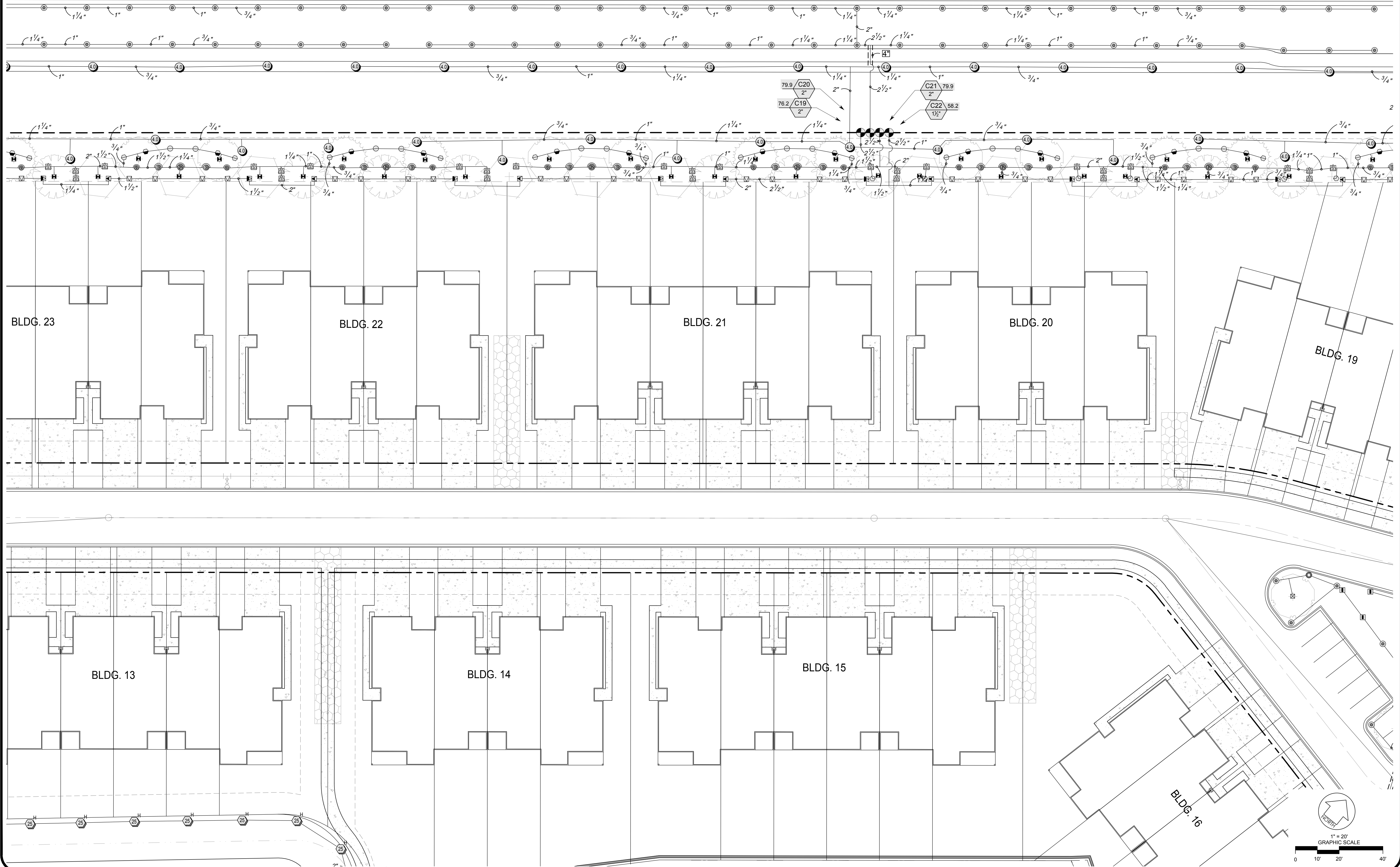
BASHAM & LUCAS
DESIGN GROUP, INC.
7645 GATE PARKWAY SUITE 101
JACKSONVILLE, FLORIDA 32256
(904) 731-2323 • bashamlucas.com
LN: AA26000586 | LC26000508

NOT FOR CONSTRUCTION

APPROVED BY: _____
OWNER: _____
CONTRACTOR: _____
DRAWN BY: CID
CHECKED BY: 3W
DATE: 07-01-19
JOB NO.: 17-60

IR1.1
BID SET

NOTES:
 1. THESE PLANS ARE DIAGRAMMATIC AND WILL REQUIRE FIELD ADJUSTMENTS. CONSULT WITH LANDSCAPE ARCHITECT FOR ADJUSTMENTS DUE TO OBSTRUCTIONS OR CONFLICTS NOT AVAILABLE FOR REVIEW AT THE TIME THESE DRAWINGS WERE CREATED.



REVISIONS

NO.	DATE	DESCRIPTION	BY

THIS DRAWING IS AN INSTRUMENT OF SERVICE AND THE PROPERTY OF BASHAM & LUCAS DESIGN GROUP AND SHALL REMAIN THEIR PROPERTY. THE USE OF THIS DRAWING IS RESTRICTED TO THE ORIGINAL SITE FOR WHICH IT IS PREPARED AND PUBLICATION THEREOF IS EXPRESSLY LIMITED TO SUCH USE.

prepared for BBX Capital Real Estate
ENTRY #2 and TOWNHOMES
 at BEACON LAKE - St. Johns County, FL
LANDSCAPE - BID SET
 IRRIGATION PLAN



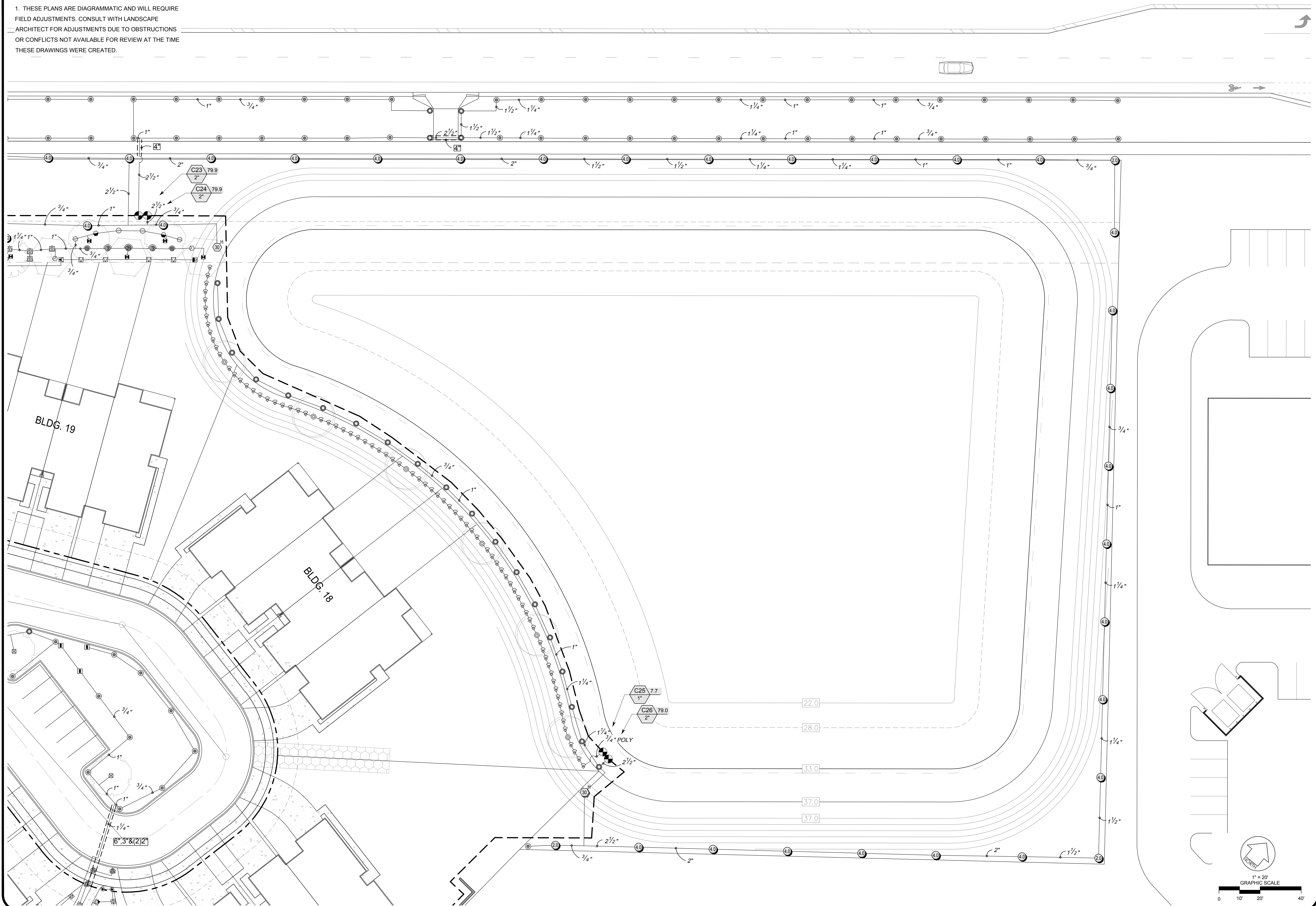
BASHAM & LUCAS
 DESIGN GROUP, INC.
 7645 GATE PARKWAY SUITE 101
 JACKSONVILLE, FLORIDA 32256
 (904) 731-2323 • bashamlucas.com
 LN: AA26000586 | LC26000508

NOT FOR CONSTRUCTION

APPROVED BY:
 OWNER:
 CONTRACTOR:
 DRAWN BY: CID
 CHECKED BY: 3W
 DATE: 07-01-19
 JOB NO.: 17-60

IR1.2
 BID SET

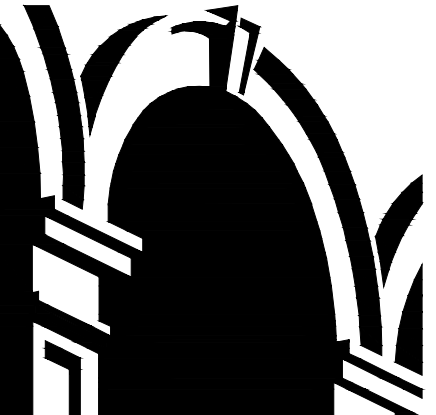
NOTES:
 1. THESE PLANS ARE DIAGRAMMATIC AND WILL REQUIRE FIELD ADJUSTMENTS. CONSULT WITH LANDSCAPE ARCHITECT FOR ADJUSTMENTS DUE TO OBSTRUCTIONS OR CONFLICTS NOT AVAILABLE FOR REVIEW AT THE TIME THESE DRAWINGS WERE CREATED.



NO.	DATE	DESCRIPTION	BY

THIS DRAWING IS AN INSTRUMENT OF SERVICE AND THE PROPERTY OF BASHAM & LUCAS DESIGN GROUP AND SHALL REMAIN THEIR PROPERTY. THE USE OF THIS DRAWING IS RESTRICTED TO THE ORIGINAL SITE FOR WHICH IT IS PREPARED AND PUBLICATION THEREOF IS EXPRESSLY LIMITED TO SUCH USE.

prepared for BBX Capital Real Estate
ENTRY #2 and TOWNHOMES
 at BEACON LAKE - St. Johns County, FL
LANDSCAPE - BID SET
 IRRIGATION PLAN

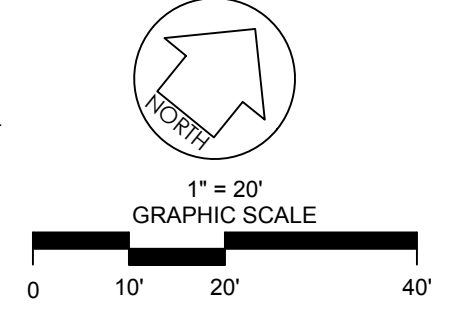


BASHAM & LUCAS
 DESIGN GROUP, INC.
 7645 GATE PARKWAY SUITE 101
 JACKSONVILLE, FLORIDA 32256
 (904) 731-2323 • bashamlucas.com
 L.N: AA26000586 | LC26000508

NOT FOR CONSTRUCTION

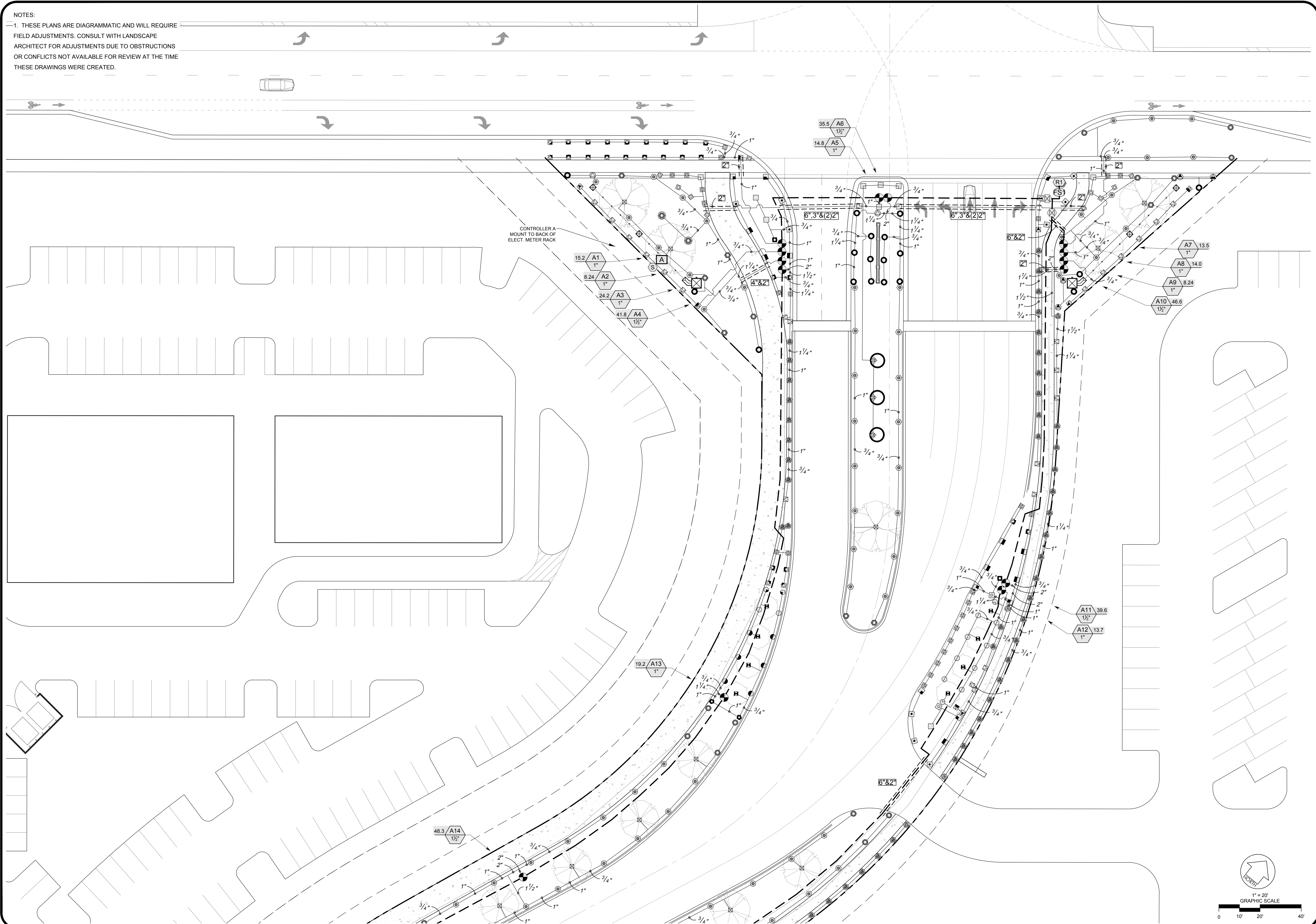
APPROVED BY:
 OWNER:
 CONTRACTOR:
 DRAWN BY: CID
 CHECKED BY: 3W
 DATE: 07-01-19
 JOB NO.: 17-60

IR1.3
 BID SET



NOTES:

1. THESE PLANS ARE DIAGRAMMATIC AND WILL REQUIRE FIELD ADJUSTMENTS. CONSULT WITH LANDSCAPE ARCHITECT FOR ADJUSTMENTS DUE TO OBSTRUCTIONS OR CONFLICTS NOT AVAILABLE FOR REVIEW AT THE TIME THESE DRAWINGS WERE CREATED.



NO.	DATE	DESCRIPTION	BY

THIS DRAWING IS AN INSTRUMENT OF SERVICE AND THE PROPERTY OF BASHAM & LUCAS DESIGN GROUP AND SHALL REMAIN THEIR PROPERTY. THE USE OF THE DRAWING IS RESTRICTED TO THE ORIGINAL SITE FOR WHICH IT IS PREPARED AND PUBLICATION THEREOF IS EXPRESSLY LIMITED TO SUCH USE.

prepared for BBX Capital Real Estate

ENTRY #2 and TOWNHOMES

at BEACON LAKE - St. Johns County, FL

LANDSCAPE - BID SET

IRRIGATION PLAN

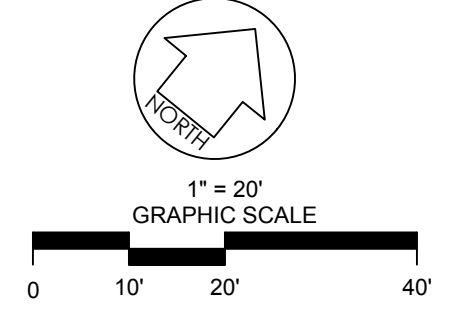


BASHAM & LUCAS
DESIGN GROUP, INC.
7645 GATE PARKWAY SUITE 101
JACKSONVILLE, FLORIDA 32256
(904) 731-2323 • bashamlucas.com
L.N: AA26000586 | LC26000508

NOT FOR CONSTRUCTION

APPROVED BY: _____
OWNER: _____
CONTRACTOR: _____
DRAWN BY: CID
CHECKED BY: 3W
DATE: 07-01-19
JOB NO.: 17-60

IR1.4
BID SET





NOTES:
 1. THESE PLANS ARE DIAGRAMMATIC AND WILL REQUIRE FIELD ADJUSTMENTS. CONSULT WITH LANDSCAPE ARCHITECT FOR ADJUSTMENTS DUE TO OBSTRUCTIONS OR CONFLICTS NOT AVAILABLE FOR REVIEW AT THE TIME THESE DRAWINGS WERE CREATED.

NO.	DATE	DESCRIPTION	BY

THIS DRAWING IS AN INSTRUMENT OF SERVICE AND THE PROPERTY OF BASHAM & LUCAS DESIGN GROUP AND SHALL REMAIN THEIR PROPERTY. THE USE OF THIS DRAWING IS RESTRICTED TO THE ORIGINAL SITE FOR WHICH IT IS PREPARED AND PUBLICATION THEREOF IS EXPRESSLY LIMITED TO SUCH USE.

prepared for: **BBX Capital Real Estate**
ENTRY #2 and TOWNHOMES
 at BEACON LAKE - St. Johns County, FL
LANDSCAPE - BID SET
 IRRIGATION PLAN

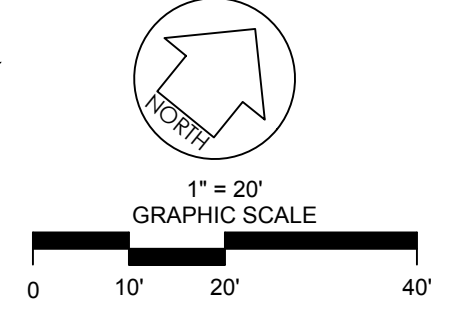


BASHAM & LUCAS
 DESIGN GROUP, INC.
 7645 GATE PARKWAY SUITE 101
 JACKSONVILLE, FLORIDA 32256
 (904) 731-2323 • bashamlucas.com
 L.N: AA26000586 | LC26000508

NOT FOR CONSTRUCTION

APPROVED BY: _____
 OWNER: _____
 CONTRACTOR: _____
 DRAWN BY: CID
 CHECKED BY: 3W
 DATE: 07-01-19
 JOB NO.: 17-60

IR1.5
 BID SET



NOTES:
 1. THESE PLANS ARE DIAGRAMMATIC AND WILL REQUIRE FIELD ADJUSTMENTS. CONSULT WITH LANDSCAPE ARCHITECT FOR ADJUSTMENTS DUE TO OBSTRUCTIONS OR CONFLICTS NOT AVAILABLE FOR REVIEW AT THE TIME THESE DRAWINGS WERE CREATED.



REVISIONS			
NO.	DATE	DESCRIPTION	BY

THIS DRAWING IS AN INSTRUMENT OF SERVICE AND THE PROPERTY OF BASHAM & LUCAS DESIGN GROUP AND SHALL REMAIN THEIR PROPERTY. THE USE OF THIS DRAWING IS RESTRICTED TO THE ORIGINAL SITE FOR WHICH IT IS PREPARED AND PUBLICATION THEREOF IS EXPRESSLY LIMITED TO SUCH USE.

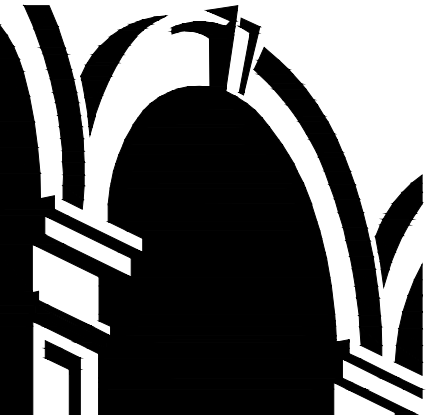
prepared for BBX Capital Real Estate

ENTRY #2 and TOWNHOMES

at BEACON LAKE - St. Johns County, FL

LANDSCAPE - BID SET

IRRIGATION PLAN

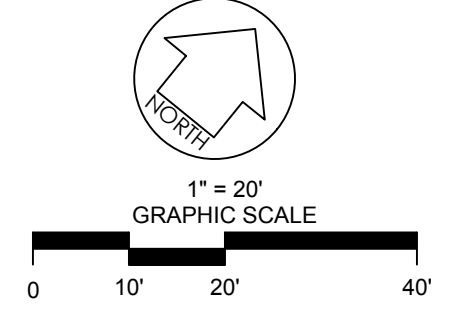


BASHAM & LUCAS
 DESIGN GROUP, INC.
 7645 GATE PARKWAY SUITE 101
 JACKSONVILLE, FLORIDA 32256
 (904) 731-2323 • bashamlucas.com
 LN: AA26000586 | LC26000508

NOT FOR CONSTRUCTION

APPROVED BY:	
OWNER:	
CONTRACTOR:	
DRAWN BY:	CID
CHECKED BY:	3W
DATE:	07-01-19
JOB NO.:	17-60

IR1.6
 BID SET





NOTES:
 1. THESE PLANS ARE DIAGRAMMATIC AND WILL REQUIRE FIELD ADJUSTMENTS. CONSULT WITH LANDSCAPE ARCHITECT FOR ADJUSTMENTS DUE TO OBSTRUCTIONS OR CONFLICTS NOT AVAILABLE FOR REVIEW AT THE TIME THESE DRAWINGS WERE CREATED.

REVISIONS

NO.	DATE	DESCRIPTION	BY

THIS DRAWING IS AN INSTRUMENT OF SERVICE AND THE PROPERTY OF BASHAM & LUCAS DESIGN GROUP AND SHALL REMAIN THEIR PROPERTY. THE USE OF THIS DRAWING IS RESTRICTED TO THE ORIGINAL SITE FOR WHICH IT IS PREPARED AND PUBLICATION THEREOF IS EXPRESSLY LIMITED TO SUCH USE.

prepared for BBX Capital Real Estate
ENTRY #2 and TOWNHOMES
 at BEACON LAKE - St. Johns County, FL
LANDSCAPE - BID SET
 IRRIGATION PLAN

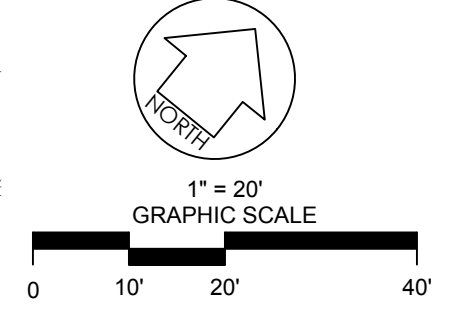


BASHAM & LUCAS
 DESIGN GROUP, INC.
 7645 GATE PARKWAY SUITE 101
 JACKSONVILLE, FLORIDA 32256
 (904) 731-2323 • bashamlucas.com
 L.N: AA26000586 | LC26000508

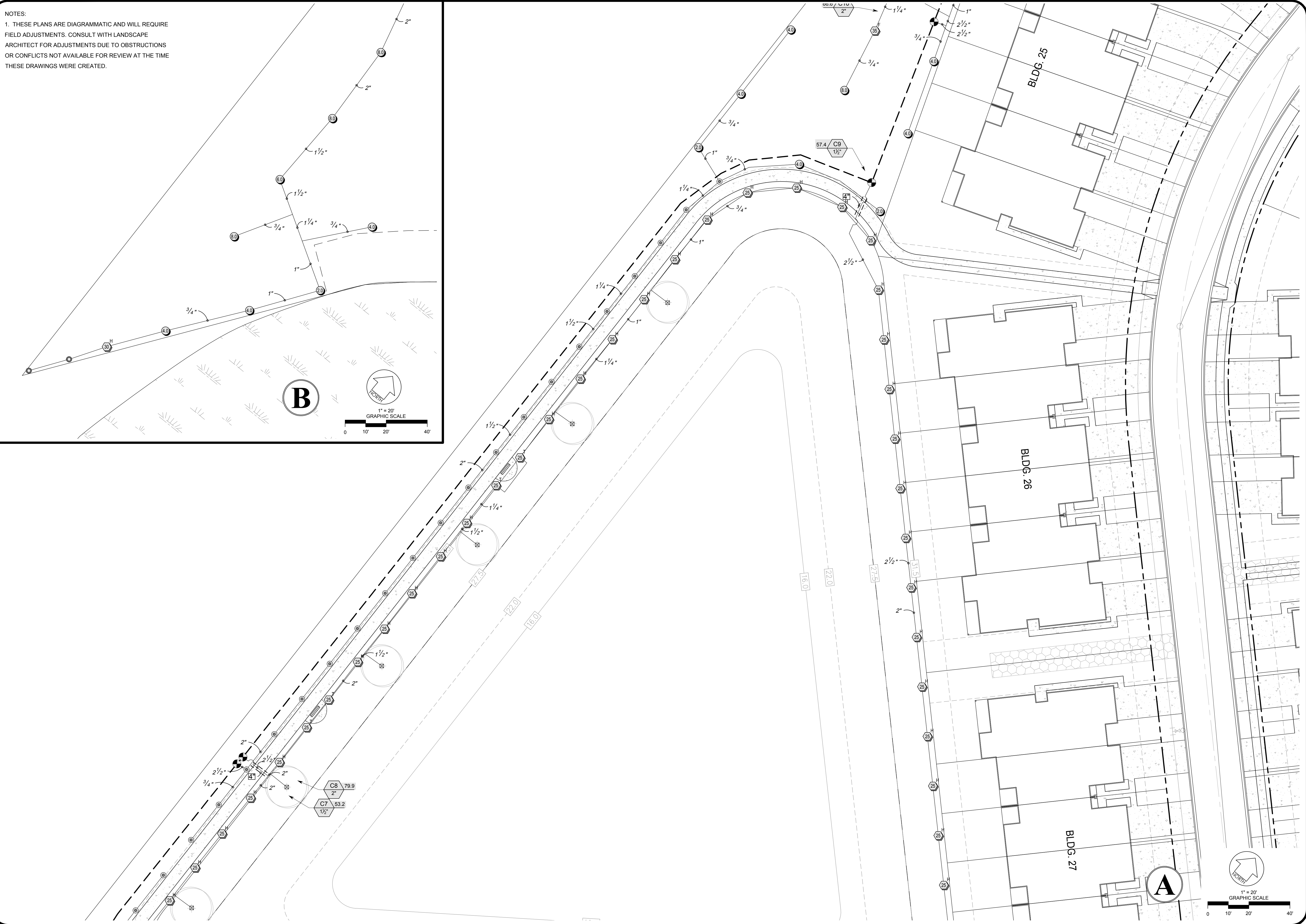
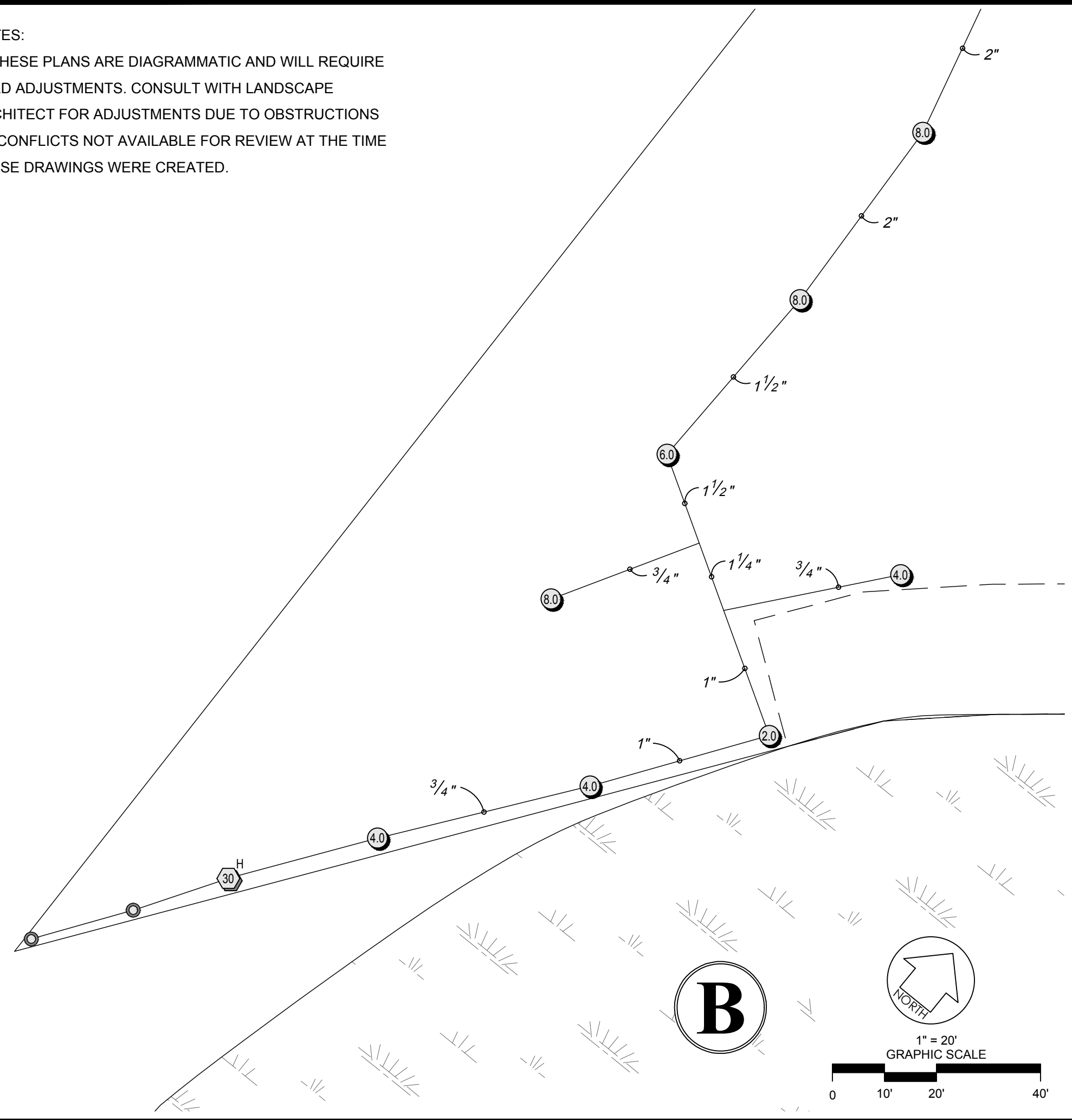
NOT FOR CONSTRUCTION

APPROVED BY:	
OWNER:	
CONTRACTOR:	
DRAWN BY:	CID
CHECKED BY:	3W
DATE:	07-01-19
JOB NO.:	17-60

IR1.7
 BID SET



NOTES:
 1. THESE PLANS ARE DIAGRAMMATIC AND WILL REQUIRE FIELD ADJUSTMENTS. CONSULT WITH LANDSCAPE ARCHITECT FOR ADJUSTMENTS DUE TO OBSTRUCTIONS OR CONFLICTS NOT AVAILABLE FOR REVIEW AT THE TIME THESE DRAWINGS WERE CREATED.

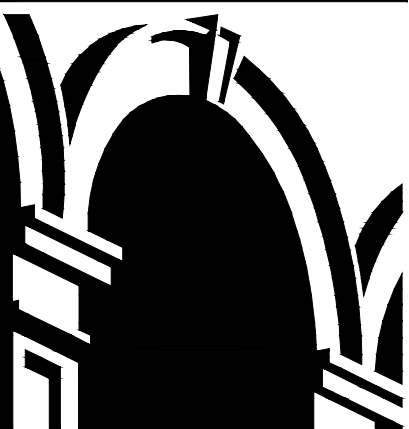


REVISIONS

NO.	DATE	DESCRIPTION	BY

THIS DRAWING IS AN INSTRUMENT OF SERVICE AND THE PROPERTY OF BASHAM & LUCAS DESIGN GROUP AND SHALL REMAIN THEIR PROPERTY. THE USE OF THE DRAWING IS RESTRICTED TO THE ORIGINAL SITE FOR WHICH IT IS PREPARED AND PUBLICATION THEREOF IS EXPRESSLY LIMITED TO SUCH USE.

prepared for BBX Capital Real Estate
ENTRY #2 and TOWNHOMES
 at BEACON LAKE - St. Johns County, FL
LANDSCAPE - BID SET
 IRRIGATION PLAN



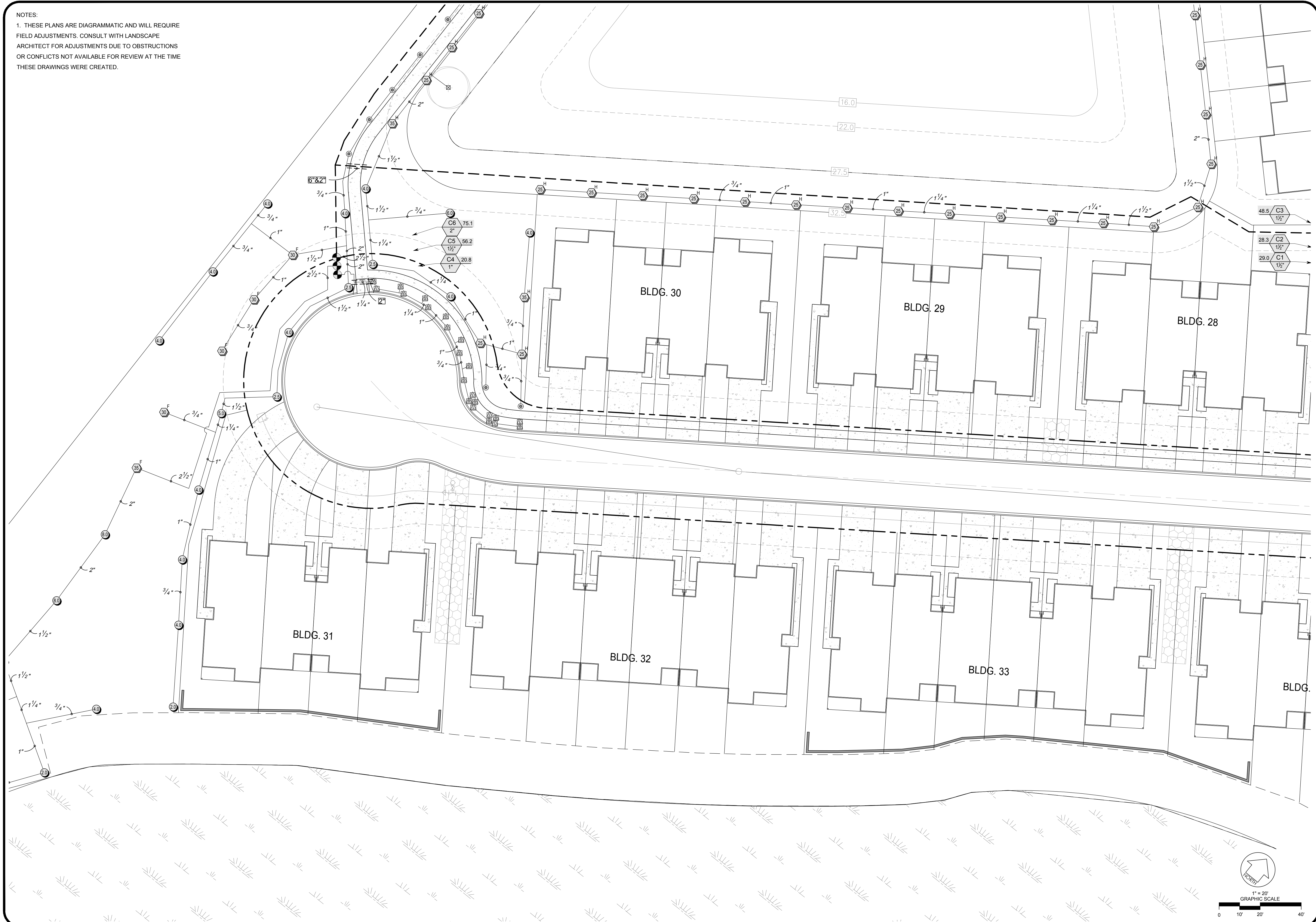
BASHAM & LUCAS
 DESIGN GROUP, INC.
 7645 GATE PARKWAY SUITE 101
 JACKSONVILLE, FLORIDA 32256
 (904) 731-2323 • bashamlucas.com
 L.N: AA26000586 | LC26000508

NOT FOR CONSTRUCTION

APPROVED BY:
 OWNER:
 CONTRACTOR:
 DRAWN BY CID
 CHECKED BY 3W
 DATE 07-01-19
 JOB NO. 17-60

IR1.8
 BID SET

NOTES:
 1. THESE PLANS ARE DIAGRAMMATIC AND WILL REQUIRE FIELD ADJUSTMENTS. CONSULT WITH LANDSCAPE ARCHITECT FOR ADJUSTMENTS DUE TO OBSTRUCTIONS OR CONFLICTS NOT AVAILABLE FOR REVIEW AT THE TIME THESE DRAWINGS WERE CREATED.



REVISIONS			
NO.	DATE	DESCRIPTION	BY

THIS DRAWING IS AN INSTRUMENT OF SERVICE AND THE PROPERTY OF BASHAM & LUCAS DESIGN GROUP AND SHALL REMAIN THEIR PROPERTY. THE USE OF THIS DRAWING IS RESTRICTED TO THE ORIGINAL SITE FOR WHICH IT IS PREPARED AND PUBLICATION THEREOF IS EXPRESSLY LIMITED TO SUCH USE.

prepared for BBX Capital Real Estate

ENTRY #2 and TOWNHOMES

at BEACON LAKE - St. Johns County, FL

LANDSCAPE - BID SET

IRRIGATION PLAN

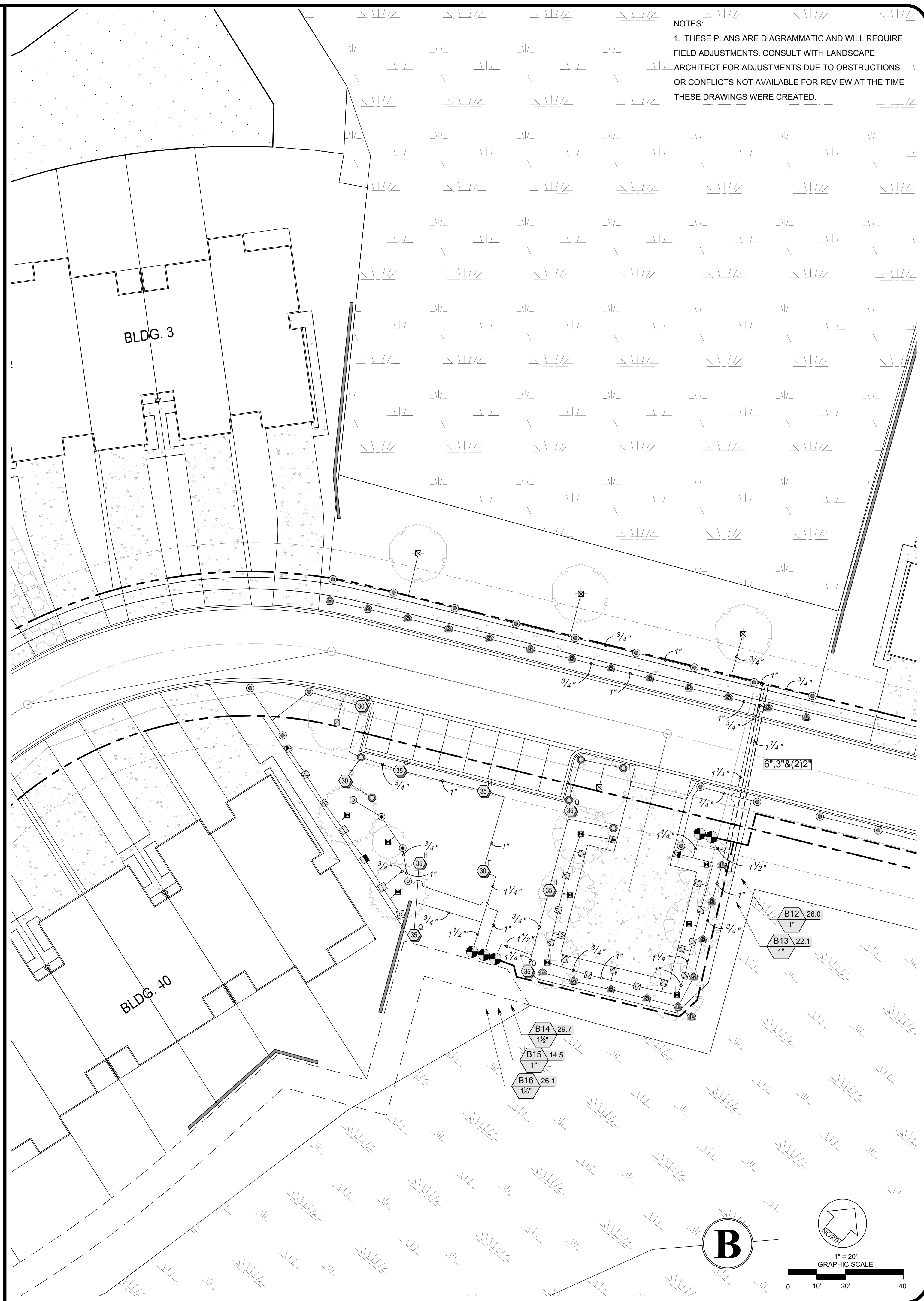
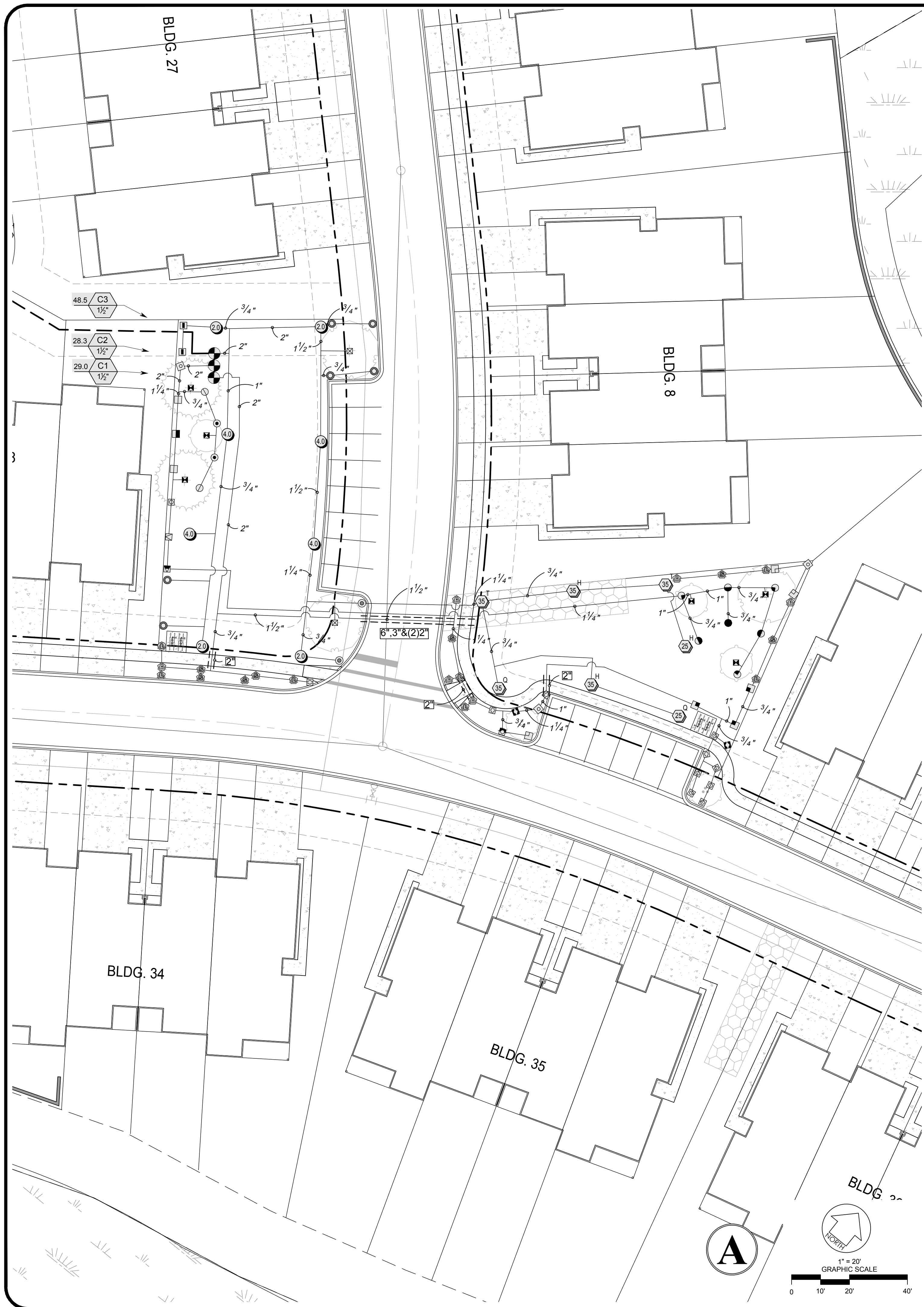


BASHAM & LUCAS
 DESIGN GROUP, INC.
 7645 GATE PARKWAY SUITE 101
 JACKSONVILLE, FLORIDA 32256
 (904) 731-2323 • bashamlucas.com
 L.N: AA26000586 | LC26000508

NOT FOR CONSTRUCTION

APPROVED BY:	
OWNER:	
CONTRACTOR:	
DRAWN BY:	CID
CHECKED BY:	3W
DATE:	07-01-19
JOB NO.:	17-60

IR1.9
 BID SET



NOTES:
 1. THESE PLANS ARE DIAGRAMMATIC AND WILL REQUIRE FIELD ADJUSTMENTS. CONSULT WITH LANDSCAPE ARCHITECT FOR ADJUSTMENTS DUE TO OBSTRUCTIONS OR CONFLICTS NOT AVAILABLE FOR REVIEW AT THE TIME THESE DRAWINGS WERE CREATED.

NO.	DATE	DESCRIPTION	BY

THIS DRAWING IS AN INSTRUMENT OF SERVICE AND THE PROPERTY OF BASHAM & LUCAS DESIGN GROUP AND SHALL REMAIN THEIR PROPERTY. THE USE OF THIS DRAWING IS RESTRICTED TO THE ORIGINAL SITE FOR WHICH IT IS PREPARED AND PUBLICATION THEREOF IS EXPRESSLY LIMITED TO SUCH USE.

prepared for: **BBX Capital Real Estate**
ENTRY #2 and TOWNHOMES
 at BEACON LAKE - St. Johns County, FL
LANDSCAPE - BID SET
 IRRIGATION PLAN



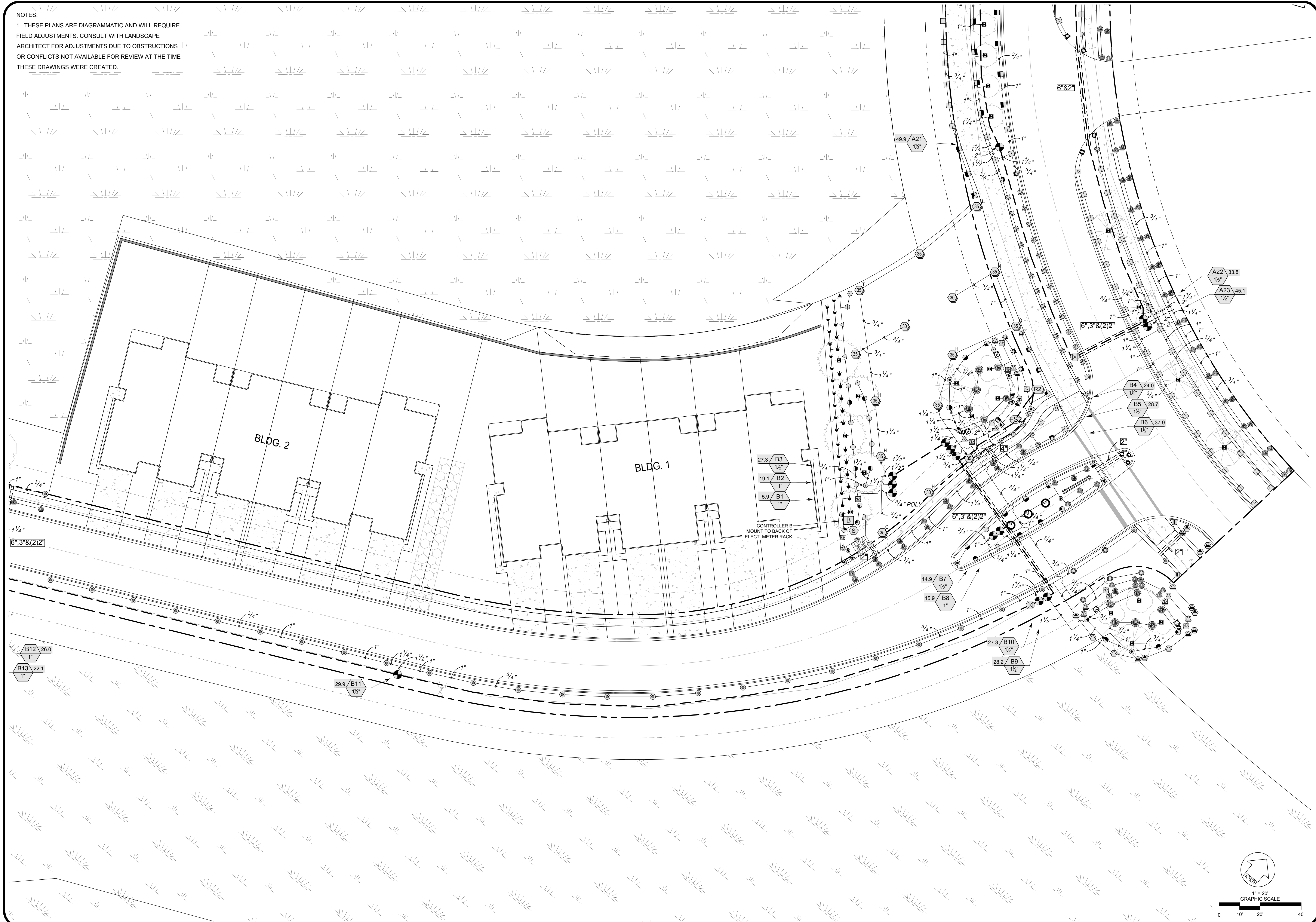
BASHAM & LUCAS
 DESIGN GROUP, INC.
 7645 GATE PARKWAY SUITE 101
 JACKSONVILLE, FLORIDA 32256
 (904) 731-2323 • bashamlucas.com
 LN: AA26000586 | LC26000508

NOT FOR CONSTRUCTION

APPROVED BY: _____
 OWNER: _____
 CONTRACTOR: _____
 DRAWN BY: CID
 CHECKED BY: 3W
 DATE: 07-01-19
 JOB NO.: 17-60

IR1.10
 BID SET

NOTES:
 1. THESE PLANS ARE DIAGRAMMATIC AND WILL REQUIRE FIELD ADJUSTMENTS. CONSULT WITH LANDSCAPE ARCHITECT FOR ADJUSTMENTS DUE TO OBSTRUCTIONS OR CONFLICTS NOT AVAILABLE FOR REVIEW AT THE TIME THESE DRAWINGS WERE CREATED.



NO.	DATE	DESCRIPTION	BY

THIS DRAWING IS AN INSTRUMENT OF SERVICE AND THE PROPERTY OF BASHAM & LUCAS DESIGN GROUP AND SHALL REMAIN THEIR PROPERTY. THE USE OF THE DRAWING IS RESTRICTED TO THE ORIGINAL SITE FOR WHICH IT IS PREPARED AND PUBLICATION THEREOF IS EXPRESSLY LIMITED TO SUCH USE.

prepared for BBX Capital Real Estate

ENTRY #2 and TOWNHOMES

at BEACON LAKE - St. Johns County, FL

LANDSCAPE - BID SET

IRRIGATION PLAN



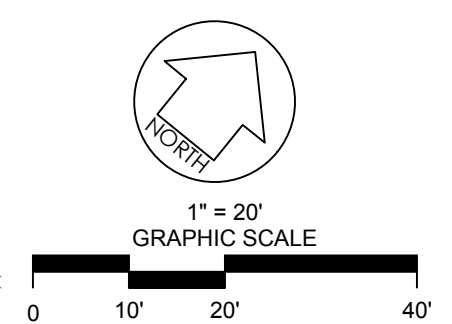
BASHAM & LUCAS
 DESIGN GROUP, INC.
 7645 GATE PARKWAY SUITE 101
 JACKSONVILLE, FLORIDA 32256
 (904) 731-2323 • bashamlucas.com
 LN: AA26000586 | LC26000508

NOT FOR CONSTRUCTION

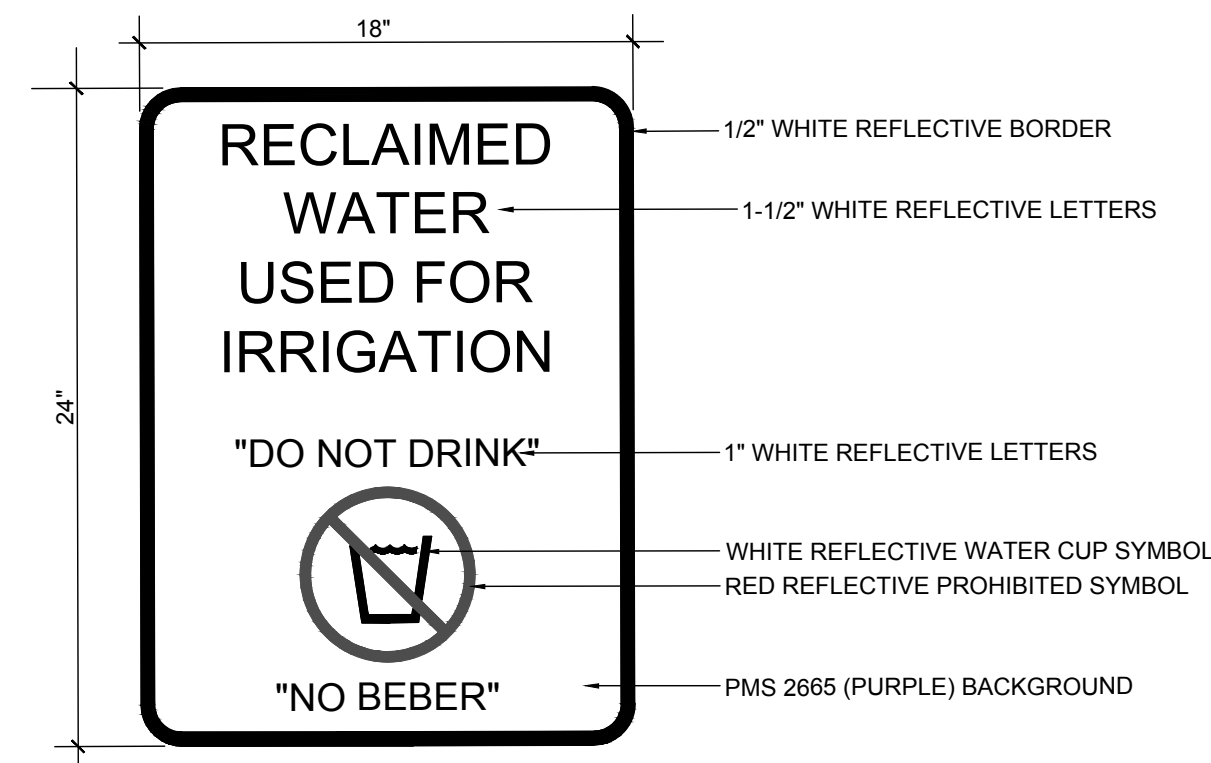
APPROVED BY: _____
 OWNER: _____
 CONTRACTOR: _____
 DRAWN BY: CID
 CHECKED BY: 3W
 DATE: 07-01-19
 JOB NO.: 17-60

IR1.11

BID SET

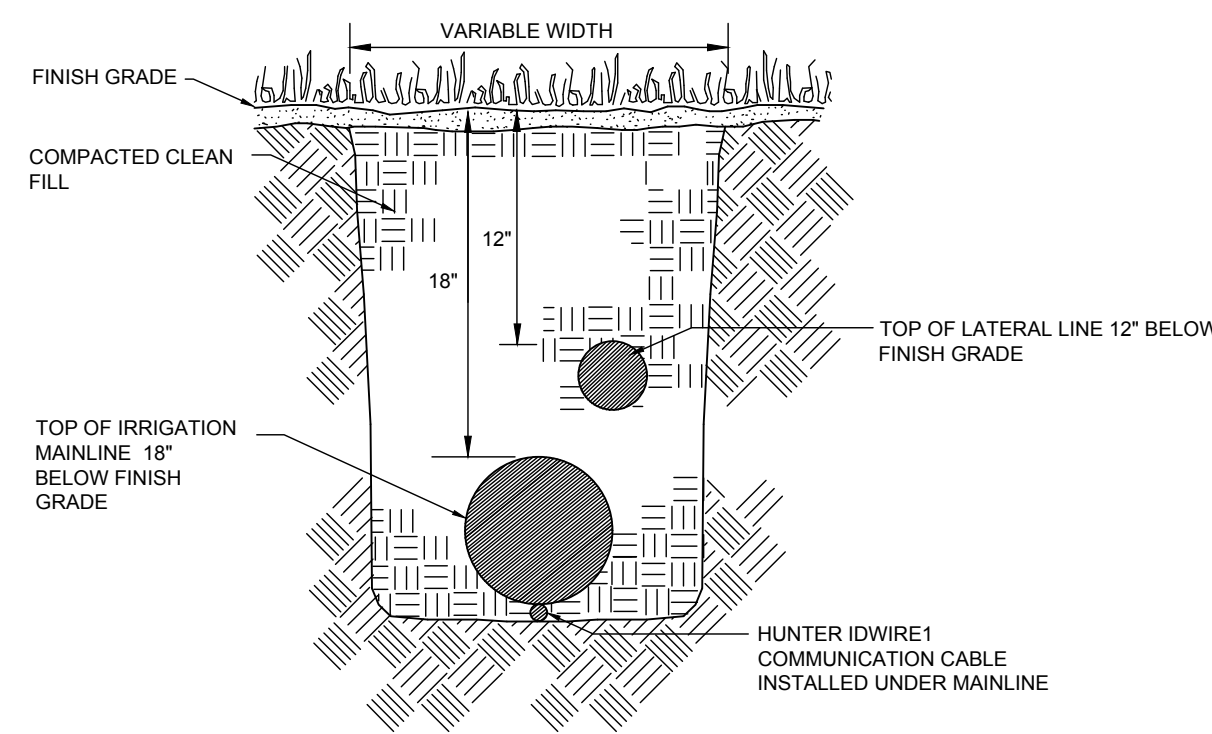


SIGNS SHALL BE DIMENSIONED AS SHOWN. SIGNS MUST BE ALUMINUM AND HAVE A MINIMUM OF .063 GAGE. DEVIATIONS TO THIS SIGN LAYOUT SHALL BE SUBMITTED TO THE IRRIGATION DESIGNER OR LANDSCAPE ARCHITECT FOR APPROVAL.



RECLAIMED WATER ADVISORY SIGN DETAIL

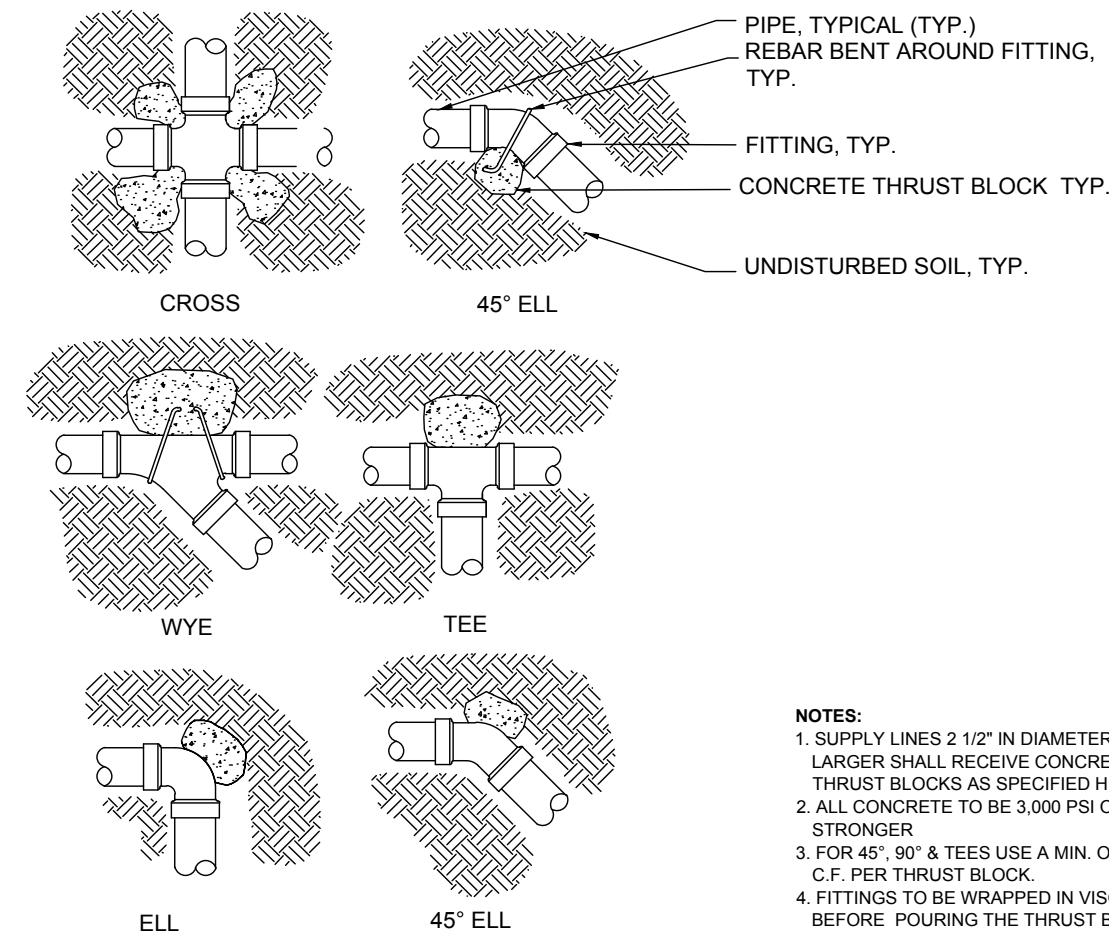
NOT TO SCALE



- NOTES:**
1. DEPTH MEASUREMENTS ARE TO BE DONE FROM FINISH GRADE TO TOP OF PIPE.
 2. PROVIDE A 6" MINIMUM VERTICAL SEPARATION BETWEEN MAINLINES AND LATERAL LINES.
 3. ALL TRENCHES SHALL BE BACKFILLED WITH CLEAN SOIL FREE OF DEBRIS & NOXIOUS WEEDS.

TRENCHING DETAIL

SCALE: NTS

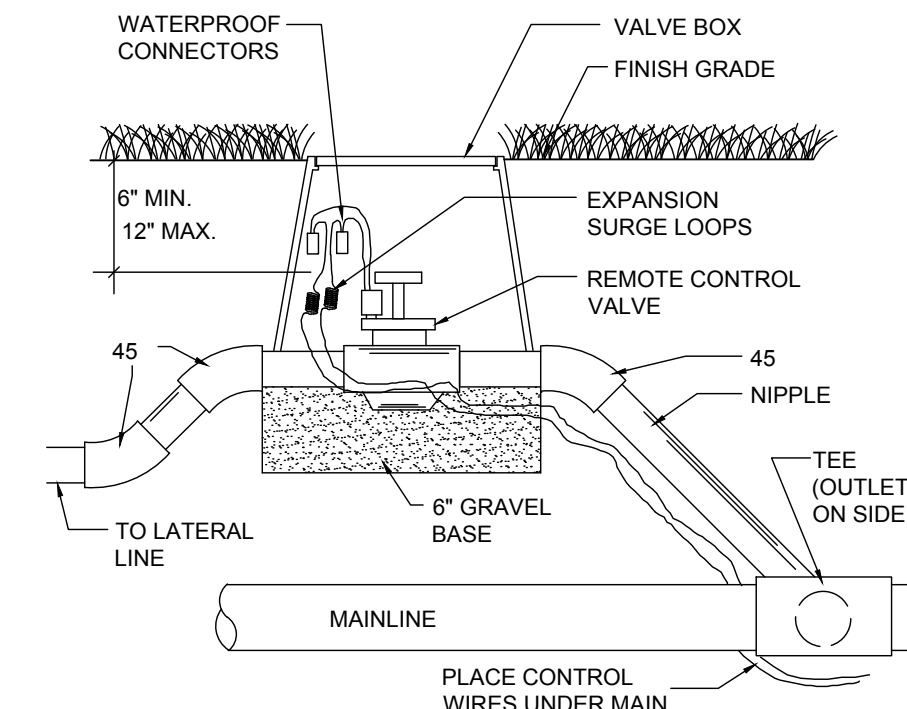


- NOTES:**
1. SUPPLY LINES 2 1/2" IN DIAMETER AND LARGER SHALL RECEIVE CONCRETE THRUST BLOCKS AS SPECIFIED HEREIN
 2. ALL CONCRETE TO BE 3,000 PSI OR STRONGER
 3. FOR 45° 90° & TEES USE A MIN. OF 2 C.F. PER THRUST BLOCK
 4. FITTINGS TO BE WRAPPED IN VISQUEEN BEFORE POURING THE THRUST BLOCK

THRUST BLOCK REINFORCEMENT DETAILS

SCALE: NTS

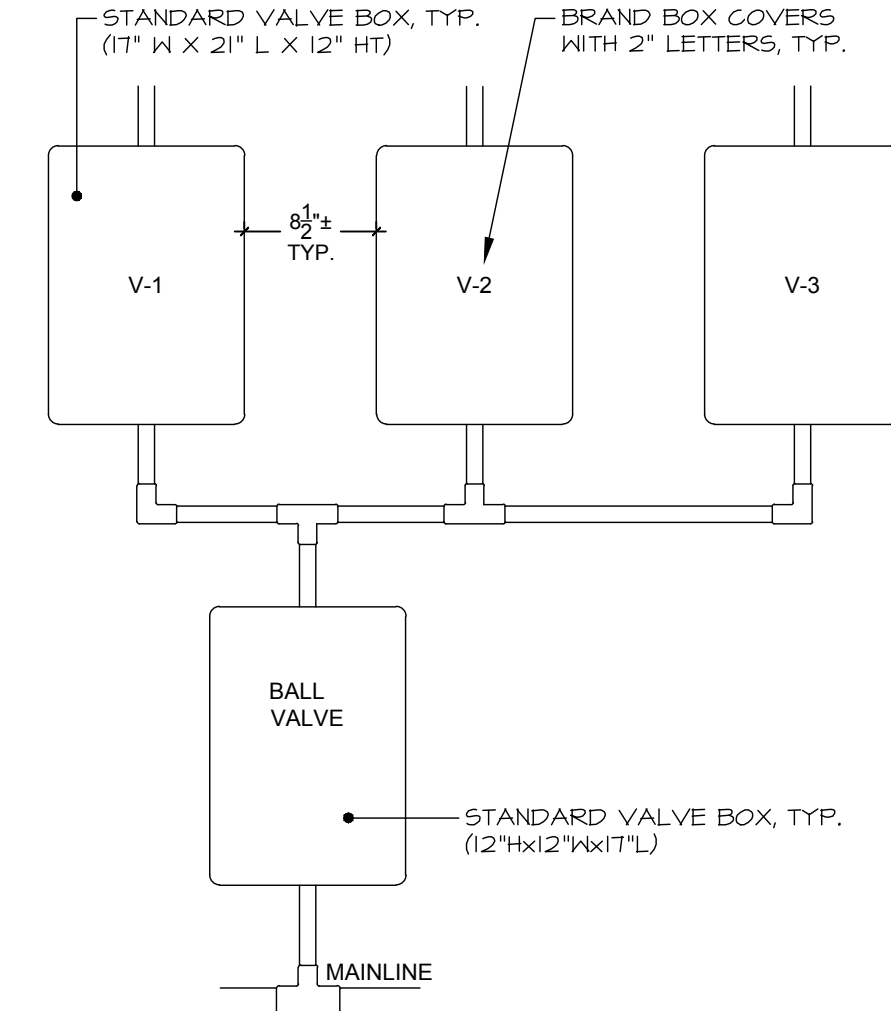
MARK ALL VALVE BOXES WITH THE ZONE NUMBER AS DIRECTED BY THE LANDSCAPE ARCHITECT.



ELECTRIC VALVE INSTALLATION DETAIL

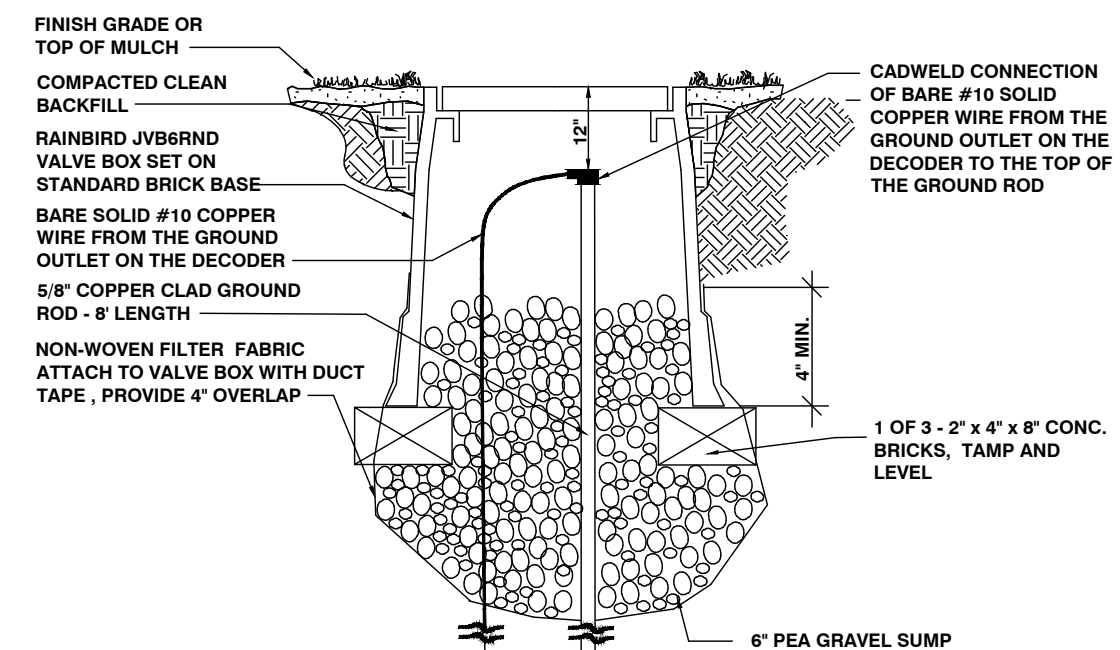
SCALE: NTS

- NOTES:**
- VALVE GROUPINGS SHALL NOT HAVE MORE THAN 3 VALVE BOXES AND 1 GATE VALVE BOX.
- PLASTIC TAGS SHALL BE AFFIXED TO EACH VALVE WITH THE ZONE NUMBER AND ZONE TYPE (TURF, SHRUB, ETC.) PREPRINTED OR LABELED WITH INDELIBLE INK.



VALVE BOX DETAIL

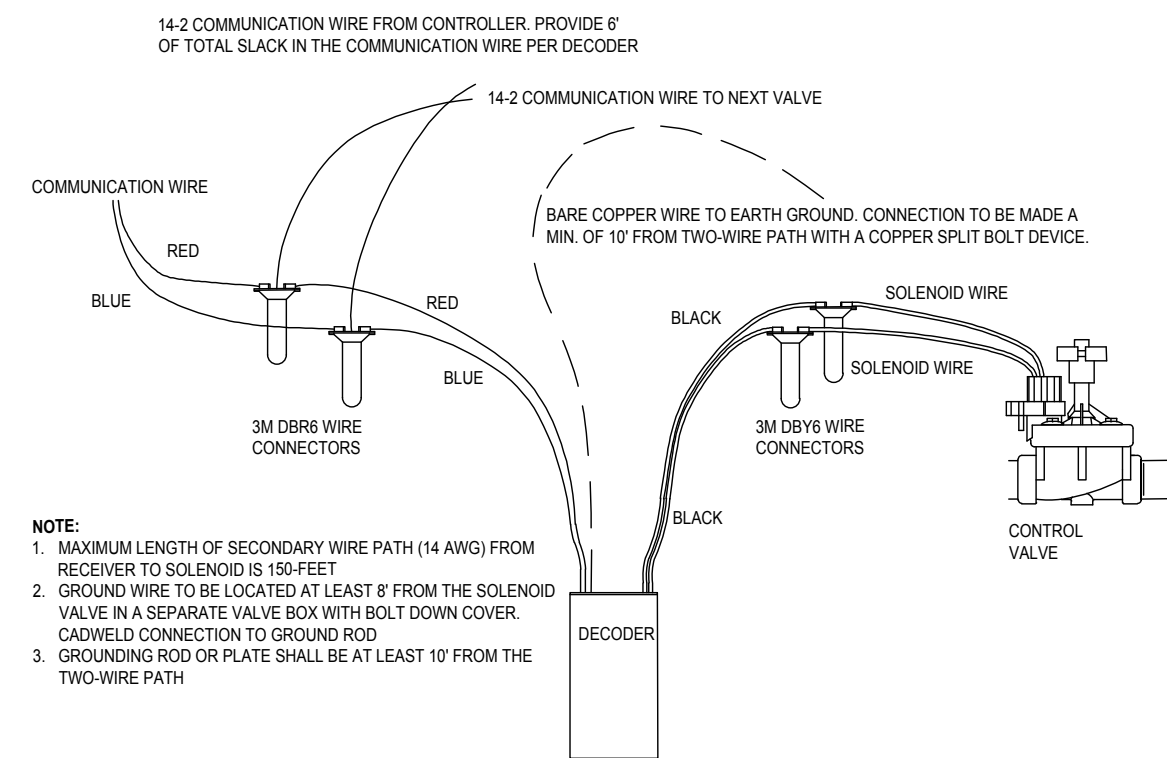
SCALE: NTS



- NOTES:**
1. THE CONTRACTOR SHALL PROVIDE SURGE PROTECTION COMPATIBLE WITH THE DECODERS LOCATED AT EACH SOLENOID VALVE.
 2. THE IRRIGATION CONTROLLER AND LAST SOLENOID VALVE ON EACH TWO-WIRE PATH SHALL BE GROUNDED UTILIZING THE MANUFACTURER'S RECOMMENDATIONS. SEE GROUND PLATE DETAIL.
 3. ALL CONNECTIONS TO THE GROUNDING SOURCE SHALL BE MADE BY A CADWELDED CONNECTION.

GROUND ROD DETAIL

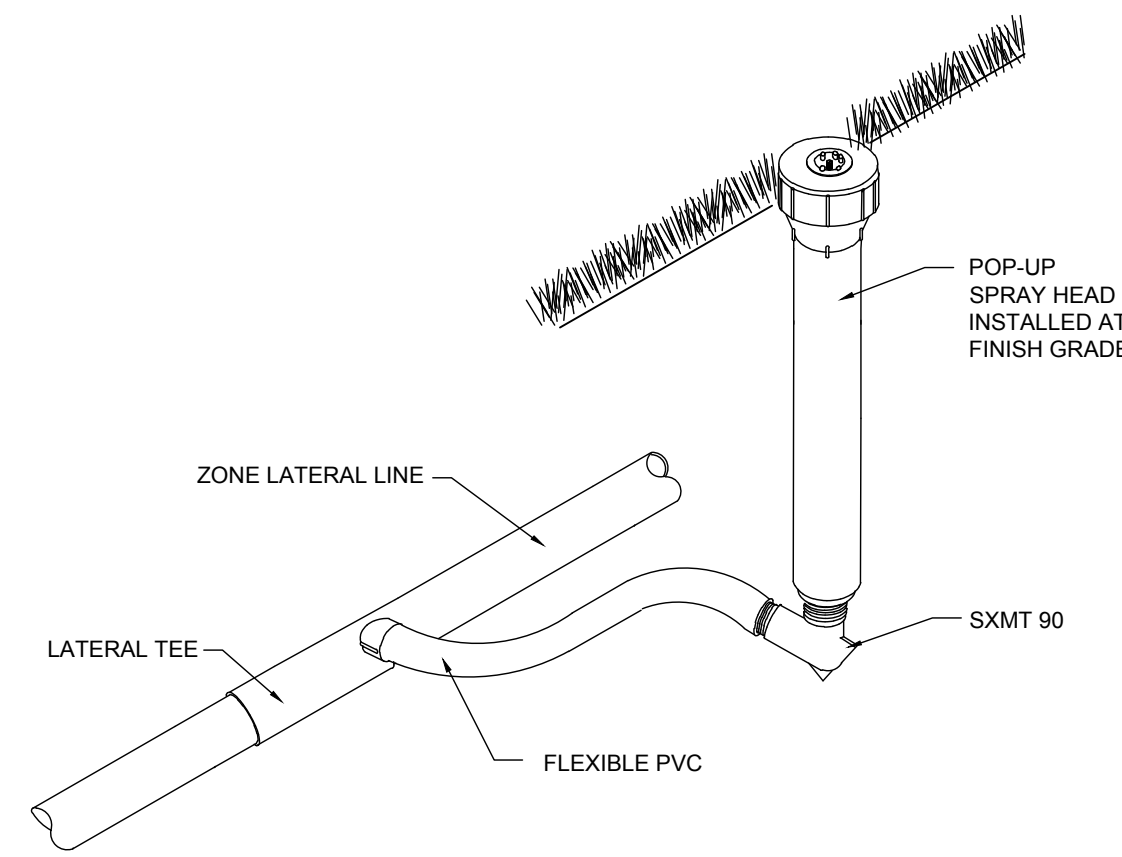
SCALE: NTS



- NOTE:**
1. MAXIMUM LENGTH OF SECONDARY WIRE PATH (14 AWG) FROM RECEIVER TO SOLENOID IS 150 FEET
 2. GROUND WIRE TO BE LOCATED AT LEAST 8" FROM THE SOLENOID VALVE IN A SEPARATE VALVE BOX WITH BOLT DOWN COVER. CADWELDED CONNECTION TO GROUND ROD
 3. GROUNDING ROD OR PLATE SHALL BE AT LEAST 10" FROM THE TWO-WIRE PATH

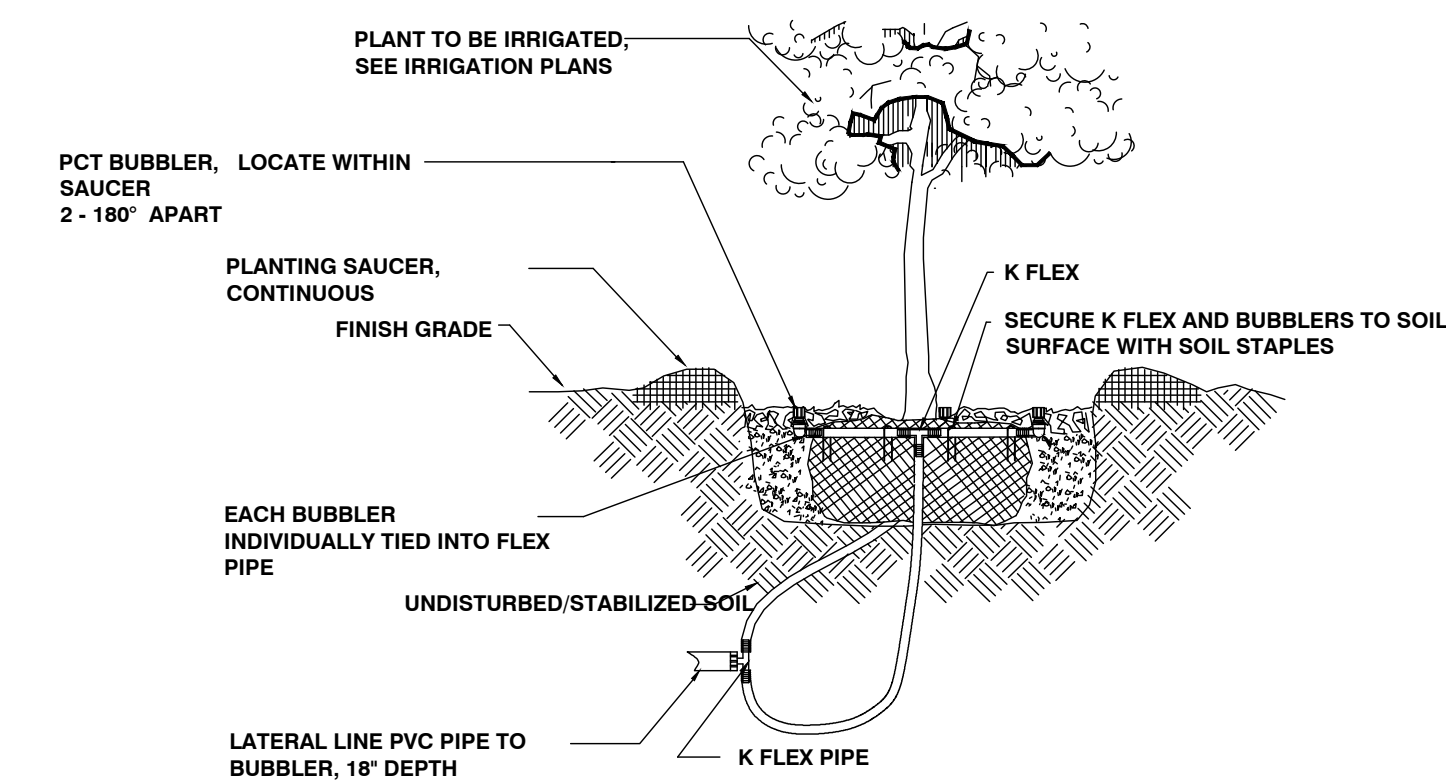
DECODER WIRING DETAIL

NOT TO SCALE



SPRAY HEAD AND ROTOR DETAIL

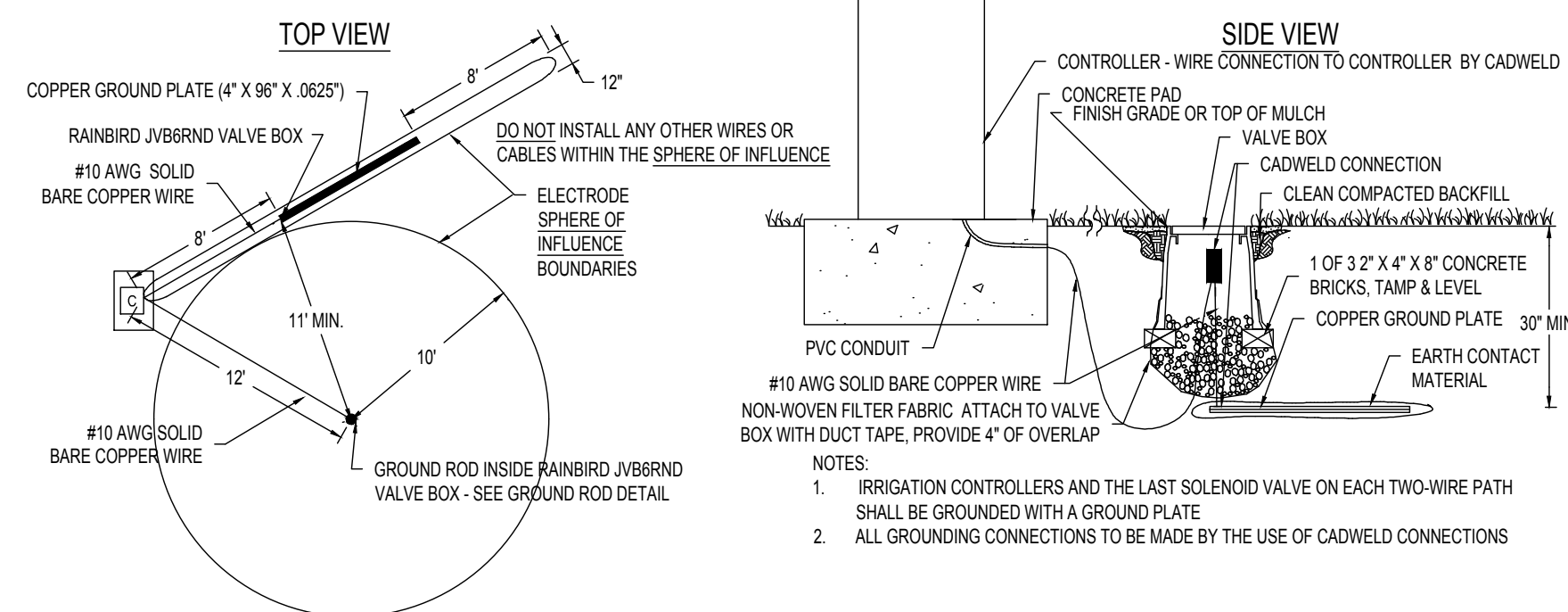
SCALE: NTS



- NOTES:**
1. BUBBLERS SHALL BE PLACED ON THE UPHILL SIDE OF ANY SLOPES & ON THE OPPOSING SIDES OF EACH ROOTBALL WITHIN THE SAUCER
 2. BUBBLERS TO BE INSTALLED ADJACENT TO ROOTBALL PERIMETER, DO NOT INSTALL BUBBLER ON TOP OF ROOTBALL OR NEXT TO TRUNK
 3. REFER TO PLANS FOR BUBBLER FLOW VOLUME AND BUBBLER QUANTITIES PER TREE OR PALM

BUBBLER APPLICATION

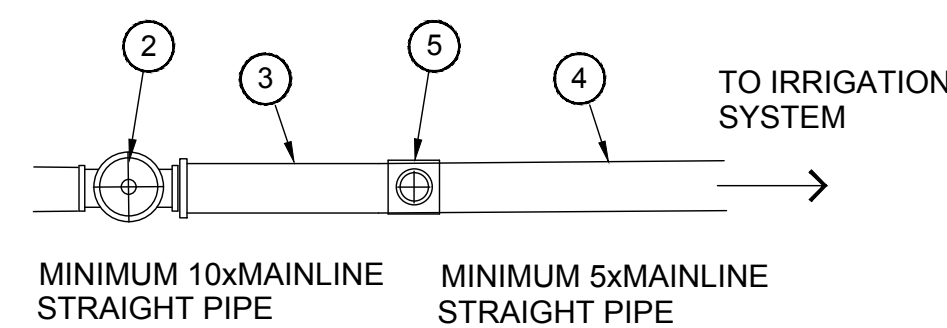
IRRIGATION DETAIL



- NOTES:**
1. IRRIGATION CONTROLLERS AND THE LAST SOLENOID VALVE ON EACH TWO-WIRE PATH SHALL BE GROUNDED WITH A GROUND PLATE
 2. ALL GROUNDING CONNECTIONS TO BE MADE BY THE USE OF CADWELDED CONNECTIONS

GROUND PLATE INSTALLATION DETAIL

SCALE: NTS

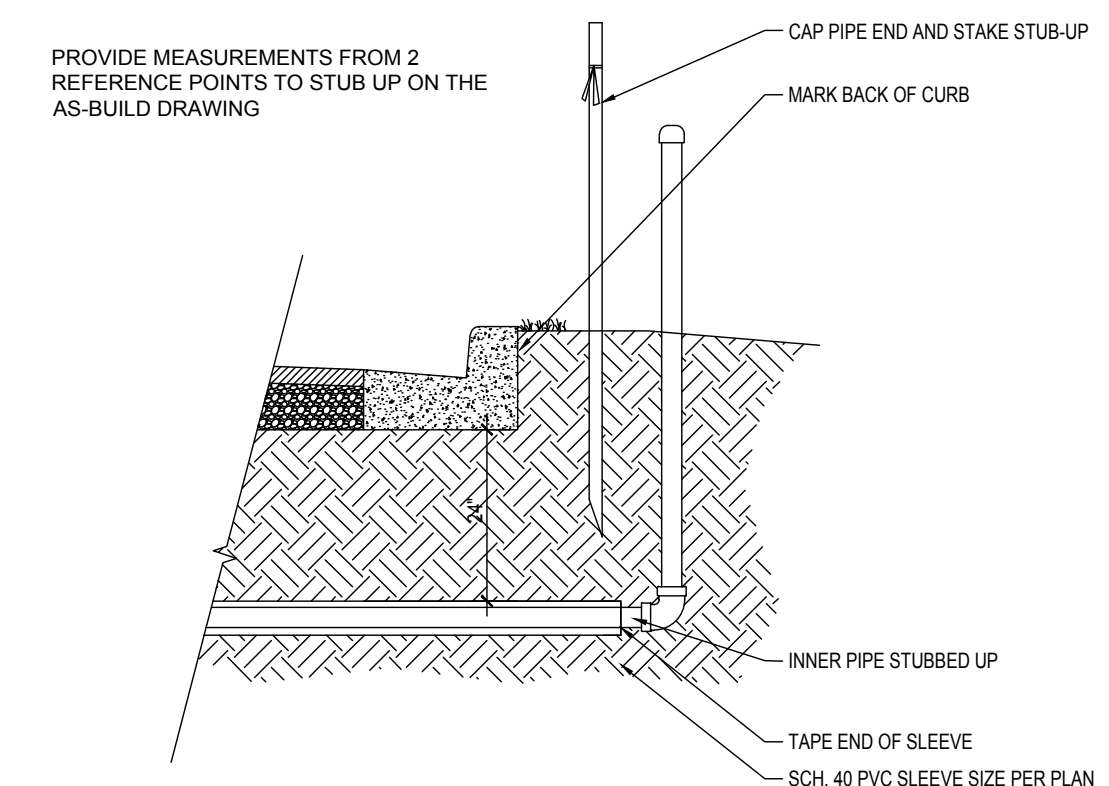


MASTER VALVE AND FLOW METER INSTALLATION DETAIL

SCALE: NTS

LEGEND

1. WATER SOURCE
2. RAINBIRD MASTER VALVE
3. 10 X MAINLINE SIZE MINIMUM STRAIGHT PIPE
4. 5 X MAINLINE SIZE MINIMUM STRAIGHT PIPE
5. FLOW SENSOR SEE LEGEND



SLEEVING ROUGH-IN DETAIL

SCALE: NTS

REVISIONS

NO.	DATE	DESCRIPTION	BY

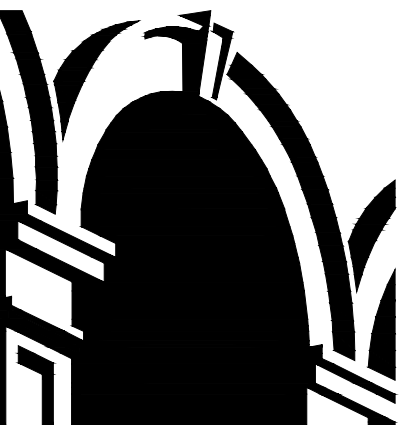
THIS DRAWING IS AN INSTRUMENT OF SERVICE AND THE PROPERTY OF BASHAM & LUCAS DESIGN GROUP AND SHALL REMAIN THEIR PROPERTY. THE USE OF THE DRAWING IS RESTRICTED TO THE ORIGINAL SITE FOR WHICH IT IS PREPARED AND PUBLICATION THEREOF IS EXPRESSLY LIMITED TO SUCH USE.

prepared for BBX Capital Real Estate

ENTRY #2 and TOWNHOMES
at BEACON LAKE - St. Johns County, FL

LANDSCAPE - BID SET

DETAILS



BASHAM & LUCAS
DESIGN GROUP, INC.

7645 GATE PARKWAY SUITE 101
JACKSONVILLE, FLORIDA 32256
(904) 731-2323 • bashamlucas.com
L.N: AA26000586 | LC26000508

NOT FOR CONSTRUCTION

APPROVED BY:	
OWNER:	
CONTRACTOR:	
DRAWN BY:	CID
CHECKED BY:	3W
DATE:	07-01-19
JOB NO.:	17-60

IR2.2

BID SET



Know what's below.
Call before you dig.